



SB MEADOWS

YOUR FOREVER HOME



Skills Builders and Developers
CONSTRUCTS YOUR DREAMS

1ST

PROJECT ON RASHID MINHAS ROAD

WITH FREE ELECTRICITY FOR EVERY FLAT

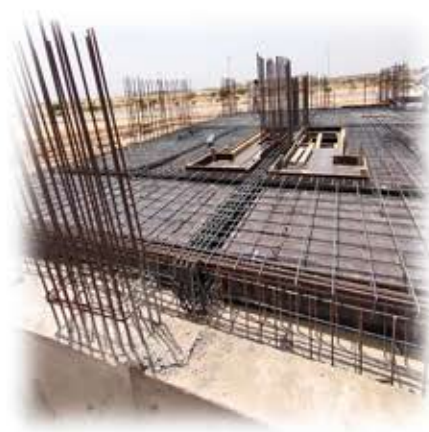
SB SKYLINE On Going Project



Introduction

Skills Builders and Developers is one of a kind construction company that has over a decade of experience in building outstanding architectural marvels that are beautiful and functional with all the amenities to ensure our clients get an ideal living experience.

We gave you SB Skyline with aspirations to touch the sky while you live in a modern futuristic building that faces Bahria Adventure theme Park to make you feel like you are living in your very own dream world.



SB EMPIRE

UPCOMING PROJECT

1ST
PURELY RESIDENTIAL
&
FULLY SERVICED APARTMENTS
(IQBAL COMMERCIAL PRECINCT II)
IN BAHRIA TOWN KARACHI



ELECTRICIAN

PLUMBER

MAID

GUARD

THESE SERVICES AVAILABLE
AT OUR PROJECT





Skills Builders and Developers
CONSTRUCTS YOUR DREAMS

SB MEADOWS

PROJECT LOCATION

**Plot No. C-11, Block-2, Gulshan-e-Iqbal
On Main Rashid Minhas Road,
(Near Imtiaz Mega) Gulshan Chowrangi, Khi.**

**FIRST PROJECT ON
RASHID MINHAS ROAD
EQUIPPED WITH SOLAR SYSTEM
FREE ELECTRIC FOR EVERY FLAT
(UPTO 300 WATTS)**



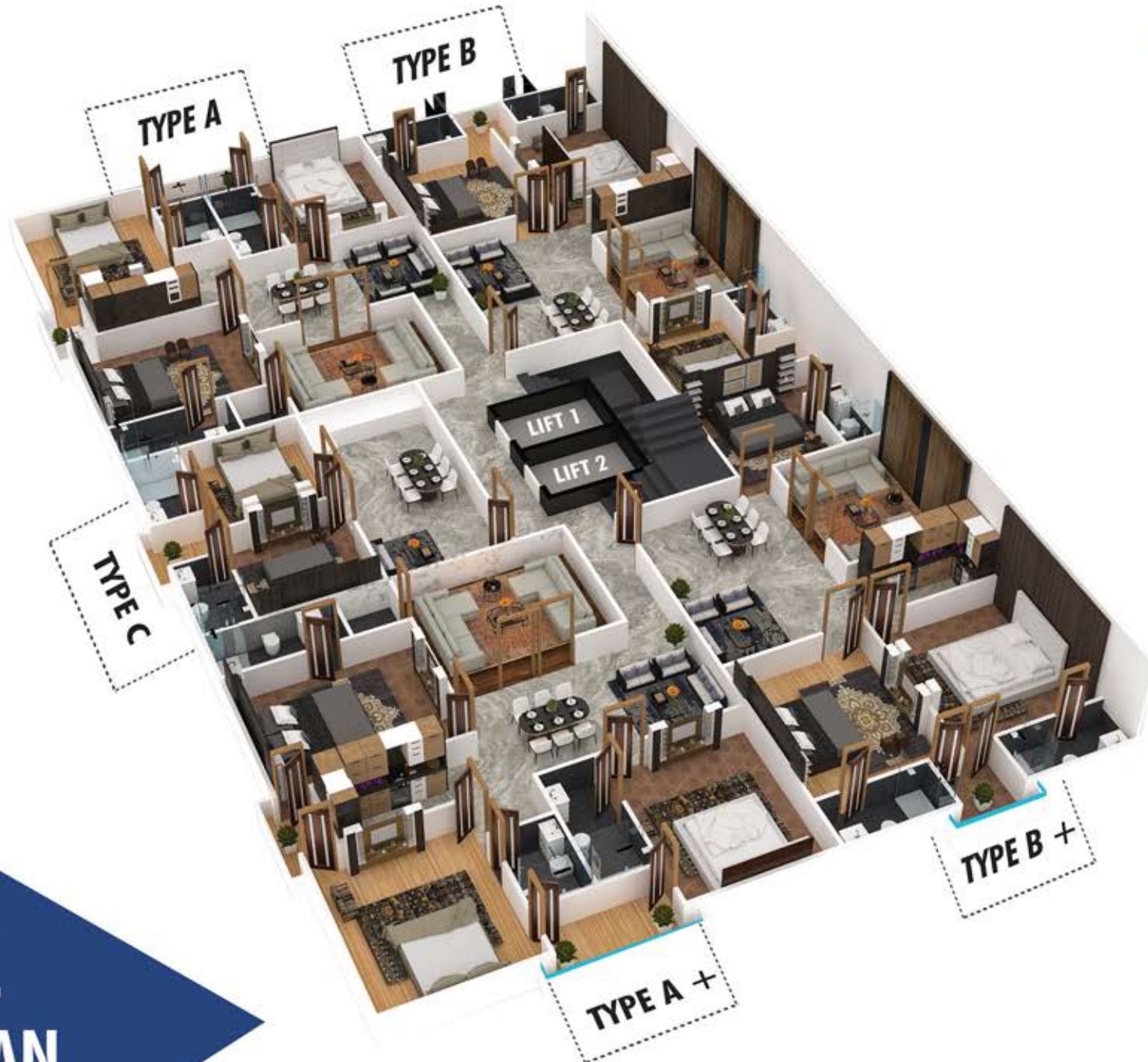
Skills Builders and Developers
CONSTRUCTS YOUR DREAMS



NOMINAL MAINTENANCE CHARGES
**FREE ELECTRICITY FOR LIFT, WATER MOTOR, PASSAGE LIGHTS,
& NET METERING ON MAINTENANCE METER**



Skills Builders and Developers
CONSTRUCTS YOUR DREAMS



TYPICAL FLOOR PLAN



Skills Builders and Developers
CONSTRUCTS YOUR DREAMS

TYPE

A+

ROAD FACING TWO SIDES
CORNER
3BEDROOMS, DRAWING &
LOUNGE APARTMENT

1365.66 SQ FT

5 ROOMS APARTMENT



BEDROOMS	14'-6" X 12'-0" 12'-0" X 14'-0" 11'-6" X 14'-0"
DRAWING	14'-0" X 11'-0"
LOUNGE	18'-3" X 10'-9"
TERRACE	9'-3" X 5'-0" 3'-6" X 5'-6"
BATH	10'-0" X 4'-6" 10'-0" X 4'-6" 4'-9" X 07'-0" 4'-6" X 04'-6"

FLOOR TYPE PLAN

A+ 1365.66 SQFT 5 ROOMS APARTMENT

PAYMENT SCHEDULE

Description	A+ Rs: 18,900 Per Sqft
ON Booking 20%	PKR 5,962,195
On Confirmation 10%	PKR 2,581,097
On Start of Work 10%	PKR 2,581,097
36 Monthly Installments	195000 x 36 = PKR 7,020,000
Half Yearly Payments (6)	1,000,000 x 6 = PKR 6,000,000
Possession	PKR 2,466,584
Total	PKR 25,810,974

IMPORTANT NOTES

1. Extra charges **5 Lac** will be charge 1st to 5th floor.
2. **10% Discount** on the full payment at the time of booking.
3. All the installments must be deposited before **10th** of each month.
4. Documentation charges for the lease, **electrical taranformer, connection charges of Gas, Electricity, Water & Sewerage etc**, will be charges extra and shall be payable by the Allottee on demand as these charges are not included in the above mention cost.
5. The Allocation of unit shall mention provisional until the company receives full & final payment.
6. All discount are subject to regular payment as per decided schedule.
7. all payment are accepted by **Cheque / Pay Order / Bank Draft**.





Skills Builders and Developers
CONSTRUCTS YOUR DREAMS

TYPE

A

WEST OPEN TWO SIDE CORNER
3 BEDROOMS DRAWING
& LOUNGE APARTMENT

1365.66 SQ FT
5 ROOMS APARTMENT



BEDROOMS	14'-6" X 12'-0" 12'-0" X 14'-0" 11'-6" X 14'-0"
DRAWING	14'-0" X 11'-0"
LOUNGE	18'-3" X 10'-9"
TERRACE	9'-3" X 5'-0" 3'-6" X 5'-6"
BATH	10'-0" X 4'-6" 10'-0" X 4'-6" 4'-9" X 07'-0" 4'-6" X 04'-6"

FLOOR TYPE PLAN

A 1365.66 SQFT 5 ROOMS APARTMENT

PAYMENT SCHEDULE

Description	A Rs: 18,500 Per Sqft
ON Booking 20%	PKR 5,052,942
On Confirmation 10%	PKR 2,526,471
On Start of Work 10%	PKR 2,526,471
36 Monthly Installments	195000 x 36 = PKR 7,020,000
Half Yearly Payments (6)	1,000,000 x 6 = PKR 6,000,000
Possession	PKR 2,138,826
Total	PKR 25,264,710

IMPORTANT NOTES

1. Extra charges 5 Lac will be charge 1st to 5th floor.
2. 10% Discount on the full payment at the time of booking.
3. All the installments must be deposited before 10th of each month.
4. Documentation charges for the lease, electrical taranformer, connection charges of Gas, Electricity, Water & Sewerage etc, will be charges extra and shall be payable by the Allottee on demand as these charges are not included in the above mention cost.
5. The Allocation of unit shall mention provisional until the company receives full & final payment.
6. All discount are subject to regular payment as per decided schedule.
7. all payment are accepted by Cheque / Pay Order / Bank Draft.





Skills Builders and Developers
CONSTRUCTS YOUR DREAMS



TYPE B + ROAD FACING TWO SIDES
CORNER
3 BEDROOMS DRAWING
& LOUNGE APARTMENT

1160.65 SQFT
5 ROOMS APARTMENT

BEDROOMS	11'-6" X 13'-6" 11'-6" X 13'-6" 10'-0" X 10'-8"
DRAWING	10'-0" X 12'-0"
LOUNGE	11'-6" X 17'-6"
TERRACE	5'-3" X 5'-0" 03'-0" X 4'-3"
BATH	9'-0" X 4'-6" 9'-0" X 4'-6" 3'-0" X 6'-6"

FLOOR TYPE PLAN

B+ 1160.65 SQFT 5 ROOMS APARTMENT

PAYMENT SCHEDULE

Description	B+ Rs: 18,900 Per Sqft
ON Booking 20%	PKR 4,387,257
On Confirmation 10%	PKR 2,193,629
On Start of Work 10%	PKR 2,193,629
36 Monthly Installments	149000 x 36 = PKR 5,364,000
Half Yearly Payments (6)	1,000,000 x 6 = PKR 6,000,000
Possession	PKR 1,797,770
Total	PKR 21,936,285

IMPORTANT NOTES

1. Extra charges 5 Lac will be charge 1st to 5th floor.
2. 10% Discount on the full payment at the time of booking.
3. All the installments must be deposited before 10th of each month.
4. Documentation charges for the lease, electrical taranformer, connection charges of Gas, Electricity, Water & Sewerage etc, will be charges extra and shall be payable by the Allottee on demand as these charges are not included in the above mention cost.
5. The Allocation of unit shall mention provisional until the company receives full & final payment.
6. All discount are subject to regular payment as per decided schedule.
7. all payment are accepted by Cheque / Pay Order / Bank Draft.





Skills Builders and Developers
CONSTRUCTS YOUR DREAMS



TYPE **B**

WEST OPEN TWO SIDES
CORNER
3 BEDROOMS DRAWING
& LOUNGE APARTMENT

1160.65 SQFT
5 ROOMS APARTMENT

BEDROOMS	11'-6" X 13'-6"
	11'-6" X 13'-6"
	10'-0" X 10'-8"
DRAWING	10'-0" X 12'-0"
LOUNGE	11'-6" X 17'-6"
TERRACE	5'-3" X 5'-0"
	03'-0" X 4'-3"
BATH	9'-0" X 4'-6"
	9'-0" X 4'-6"
	3'-0" X 6'-6"

FLOOR TYPE PLAN

B 1160.65 SQFT 5 ROOMS APARTMENT

PAYMENT SCHEDULE

Description	B Rs: 18,500 Per Sqft
ON Booking 20%	PKR 4,294,405
On Confirmation 10%	PKR 2,147,203
On Start of Work 10%	PKR 2,147,203
36 Monthly Installments	149000 x 36 = PKR 5,364,000
Half Yearly Payments (6)	1,000,000 x 6 = PKR 6,000,000
Possession	PKR 1,519,215
Total	PKR 21,472,025

IMPORTANT NOTES

1. Extra charges **5 Lac** will be charge 1st to 5th floor.
2. **10% Discount** on the full payment at the time of booking.
3. All the installments must be deposited before **10th** of each month.
4. Documentation charges for the lease, **electrical taranformer, connection charges of Gas, Electricity, Water & Sewerage etc**, will be charges extra and shall be payable by the Allottee on demand as these charges are not included in the above mention cost.
5. The Allocation of unit shall mention provisional until the company receives full & final payment.
6. All discount are subject to regular payment as per decided schedule.
7. all payment are accepted by **Cheque / Pay Order / Bank Draft**.





Skills Builders and Developers
CONSTRUCTS YOUR DREAMS

TYPE

C

TWO BEDROOMS
& LOUNGE APARTMEN

690.40 SQFT
3 ROOMS APARTMENT

BEDROOMS 10'-0" X 10'-3"
10'-0" X 10'-3"

LOUNGE 10'-0" X 16'-6"

BATH 4'-4" X 8'-0"
4'-4" X 8'-0"

TERRACE 04'-6" X 5'-6"



FLOOR TYPE PLAN

C 690.40 SQFT 3 ROOMS APARTMENT

PAYMENT SCHEDULE

Description	C Rs: 18,500 Per Sqft
ON Booking 20%	PKR 2,554,480
On Confirmation 10%	PKR 1,277,240
On Start of Work 10%	PKR 1,277,240
36 Monthly Installments	75000 x 36 = PKR 27,00,000
Half Yearly Payments (6)	7,00,000 x 6 = PKR 42,00,000
Possession	PKR 763,440
Total	PKR 12,772,400

IMPORTANT NOTES

1. Extra charges **5 Lac** will be charge 1st to 5th floor.
2. **10% Discount** on the full payment at the time of booking.
3. All the installments must be deposited before **10th** of each month.
4. Documentation charges for the lease, **electrical taranformer, connection charges of Gas, Electricity, Water & Sewerage etc**, will be charges extra and shall be payable by the Allottee on demand as these charges are not included in the above mention cost.
5. The Allocation of unit shall mention provisional until the company receives full & final payment.
6. All discount are subject to regular payment as per decided schedule.
7. all payment are accepted by **Cheque / Pay Order / Bank Draft**.





Skills Builders and Developers
CONSTRUCTS YOUR DREAMS

Ground Floor Plan



SHOWROOM 1

15'11" X 90'0"
TOTAL SQFT 1430

SHOWROOM 2

15.7'0" X 90'0"
TOTAL SQFT 1400

SHOWROOM 3

15.7'0" X 90'0"
TOTAL SQFT 1866



Skills Builders and Developers
CONSTRUCTS YOUR DREAMS

SHOWROOMS

PAYMENT SCHEDULE

SHOWROOM G-1

Description 1430 Sqft	G-1 Rs: 1,25,000 Per Sqft
ON Booking 30%	PKR 53,625,000
On allocation 10%	PKR 17,875,000
On Confirmation 10%	PKR 17,875,000
On Start of Work 10%	PKR 17,875,000
24 Monthly Installments	22,34,375 x 24 = PKR 5,36,25,000
Possession	PKR 17,875,000
Total	PKR 17,875,000

SHOWROOM G-2

Description 1400 Sqft	G-2 Rs: 125,000 Per Sqft
ON Booking 30%	PKR 52,500,000
On allocation 10%	PKR 17,500,000
On Confirmation 10%	PKR 17,500,000
On Start of Work 10%	PKR 17,500,000
24 Monthly Installments	2187500 x 24 = PKR 52,500,000
Possession	PKR 17,500,000
Total	PKR 17,500,000

SHOWROOM G-3

Description 1866 Sqft	G-3 Rs: 125,000 Per Sqft
ON Booking 30%	PKR 69,975,000
On allocation 10%	PKR 23,325,000
On Confirmation 10%	PKR 23,325,000
On Start of Work 10%	PKR 23,325,000
24 Monthly Installments	2915625 x 24 = PKR 69,975,000
Possession	PKR 23,325,000
Total	PKR 23,325,000

IMPORTANT NOTES

1. Extra charges **5 Lac** will be charge 1st to 5th floor.
2. **10% Discount** on the full payment at the time of booking.
3. All the installments must be deposited before **10th** of each month.
4. Documentation charges for the lease, **electrical taranformer, connection charges of Gas, Electricity, Water & Sewerage etc**, will be charges extra and shall be payable by the Allottee on demand as these charges are not included in the above mention cost.
5. The Allocation of unit shall mention provisional until the company receives full & final payment.
6. All discount are subject to regular payment as per decided schedule.
7. all payment are accepted by **Cheque / Pay Order / Bank Draft**.



Skills Builders and Developers
CONSTRUCTS YOUR DREAMS

Lower Ground Plan



SHOWROOM 1

30'0" X 90'0"
TOTAL SQFT 2700

SHOWROOM 2

30'0" X 90'0"
TOTAL SQFT 2700

SHOWROOM 1
30'0" X 90'0"
TOTAL SQFT 2700

SHOWROOM 2
30'0" X 90'0"
TOTAL SQFT 2700

DOWN

DOWN



Skills Builders and Developers
CONSTRUCTS YOUR DREAMS

SHOWROOMS

PAYMENT SCHEDULE

SHOWROOM LG-1 & LG-2

Description 2700 Sqft	LG-1 Rs: 1,000,00 Per Sqft
ON Booking 30%	PKR 8,10,000,00
On allocation 10%	PKR 2,70,000,00
On Confirmation 10%	PKR 2,70,000,00
On Start of Work 10%	PKR 2,70,000,00
24 Monthly Installments	3,375,000 x 24 = PKR 8,10,000,00
Possession	PKR 2,70,000,00
Total	PKR 2,70,000,000

Addresses

📍 Plot# B-85, Main Jinnah Avenue
Bahria Town, Karachi, Pakistan.

📍 Suit# P-1, Top Floor, Plot# 96/97,
Main Khayaban-e-Roomi Block-9, Clifton,
BRC Tower, Karachi, Pakistan.

📍 Suit# 301, 3rd Floor, Plot# 15-C,
Main Khayaban-e-Ittehad, Phase II, Clifton,
Karachi, Pakistan

Contact# +92 311 112 2433 (0311-112 2433)

IMPORTANT NOTES

1. Extra charges **5 Lac** will be charge 1st to 5th floor.
2. **10% Discount** on the full payment at the time of booking.
3. All the installments must be deposited before **10th** of each month.
4. Documentation charges for the lease, **electrical taranformer, connection charges of Gas, Electricity, Water & Sewerage etc**, will be charges extra and shall be payable by the Allottee on demand as these charges are not included in the above mention cost.
5. The Allocation of unit shall mention provisional until the company receives full & final payment.
6. All discount are subject to regular payment as per decided schedule.
7. all payment are accepted by **Cheque / Pay Order / Bank Draft**.

🌐 www.skillsbuildersdevelopers.com ✉ info@skillsbuildersdevelopers.com